

CM10-3 A-R-A-E-AVBE F-A-A-N

Grundfos Pump 96806946



Thank you for your interest in our products



Please contact us for more information, or visit our website

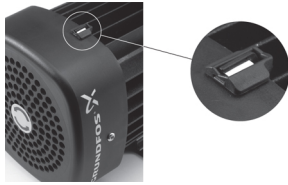
<https://www.lenntech.com/grundfos/CMBASIS/96806946/CM10-3-A-R-A-E-AVBE.html>

info@lenntech.com

tel. +31-15-261.09.00

fax. +31-15-261.62.89

Position	Qty.	Description
	1	<p>CM10-3 A-R-A-E-AVBE</p>  <p>Product No.: 96806946</p> <p>Compact, reliable, horizontal, multistage, end-suction centrifugal pump with axial suction port and radial discharge port. The shaft, impellers and chambers are made of stainless steel. The inlet and discharge parts are made of cast iron. The mechanical shaft seal is a special designed, unbalanced O-ring seal. Pipework connection is via internal Whitworth pipe threads, Rp (ISO 7/1).</p> <p>The pump is fitted with a 3-phase, foot-mounted, fan-cooled asynchronous motor.</p> <p>Further product details</p> <p>Pump and motor are integrated in a compact and user-friendly design. The pump is fitted to a low base plate, making it ideal for installation in systems where compactness is important.</p> <p>The state-of-the-art design and materials of the shaft seal ensure high wear resistance, improved sticking and dry-running capabilities and long operating life.</p> <p>Servicing the pump requires no special service tools. Service parts are in stock for quick delivery and are available as kits, single parts or bulk. Service videos are available on www.youtube.com.</p> <p>Pump</p> <p>A combination of a stop ring and a Nord-lock® washer secures a tight and reliable fixation of the impeller spacing pipes to the splined pump shaft. It is possible to remove and fit the hydraulic parts from the pump side. The inlet part, chambers and discharge part are hold together by four staybolts.</p> <p>The pump is fitted with an unbalanced O-ring seal with a rigid torque transmission system. It has a fixed seal driver ensuring a reliable rotation of all parts. The dynamic secondary seal is an O-ring.</p> <p>Primary seal:</p> <ul style="list-style-type: none"> - Rotating seal ring material: Aluminium oxide (alumina) - Stationary seat material: Carbon graphite, resin-impregnated <p>Carbon graphite against alumina is a good all-round seal for not too demanding applications. The corrosion resistance is often limited in water to a range between pH 5 and pH 10. Usage in liquids above +90 °C is not recommended. The seal can handle dry-running conditions for short periods.</p> <p>Secondary seal material: EPDM (ethylene-propylene rubber)</p> <p>EPDM has excellent resistance to hot water. EPDM is not suitable for mineral oils.</p>  <p>The pump shaft is connected to the motor shaft through a left thread and tight fit. The shaft cannot be dismantled.</p> <p>Motor</p> <p>The motor is a totally enclosed, fan-cooled motor with principal dimensions to EN 50347. Electrical tolerances comply with EN 60034.</p> <p>The motor efficiency is classified as IE2 in accordance with IEC 60034-30.</p> <p>The motor does not incorporate motor protection and must be connected to a motor-protective circuit breaker which can be manually reset. The motor-protective circuit breaker must be set according to the rated current of the motor (I1/1).</p> <p>An installation indicator is fitted to the motor fan cover. Based on the motor cooling air, it indicates the direction of rotation of the motor. The motor is fitted with a directional sticker.</p>



The motor can be connected to a variable speed drive for adjustment of pump performance to any duty point. Grundfos CUE offers a range of variable speed drives. Please find more information in Grundfos Product Center.

Technical data

Liquid:

Pumped liquid: Water
 Liquid temperature range: -20 .. 90 °C
 Liquid temperature during operation: 20 °C
 Density: 998.2 kg/m³

Technical:

Speed for pump data: 2900 rpm
 Rated flow: 10 m³/h
 Rated head: 40.5 m
 Primary shaft seal: AVBE
 Approvals on nameplate: CE,WRAS,ACS,TR,EAC
 Curve tolerance: ISO9906:2012 3B

Materials:

Pump housing: Cast iron
 EN-JL1030
 ASTM 30 B
 Impeller: Stainless steel
 DIN W.-Nr. 1.4301
 AISI 304
 Rubber: EPDM

Installation:

Maximum ambient temperature: 55 °C
 Maximum operating pressure: 10 bar
 Max pressure at stated temp: 6 bar / 90 °C
 10 bar / 40 °C
 Flange standard: WHITWORTH THREAD RP
 Pump inlet: Rp 1 1/2
 Pump outlet: Rp 1 1/2

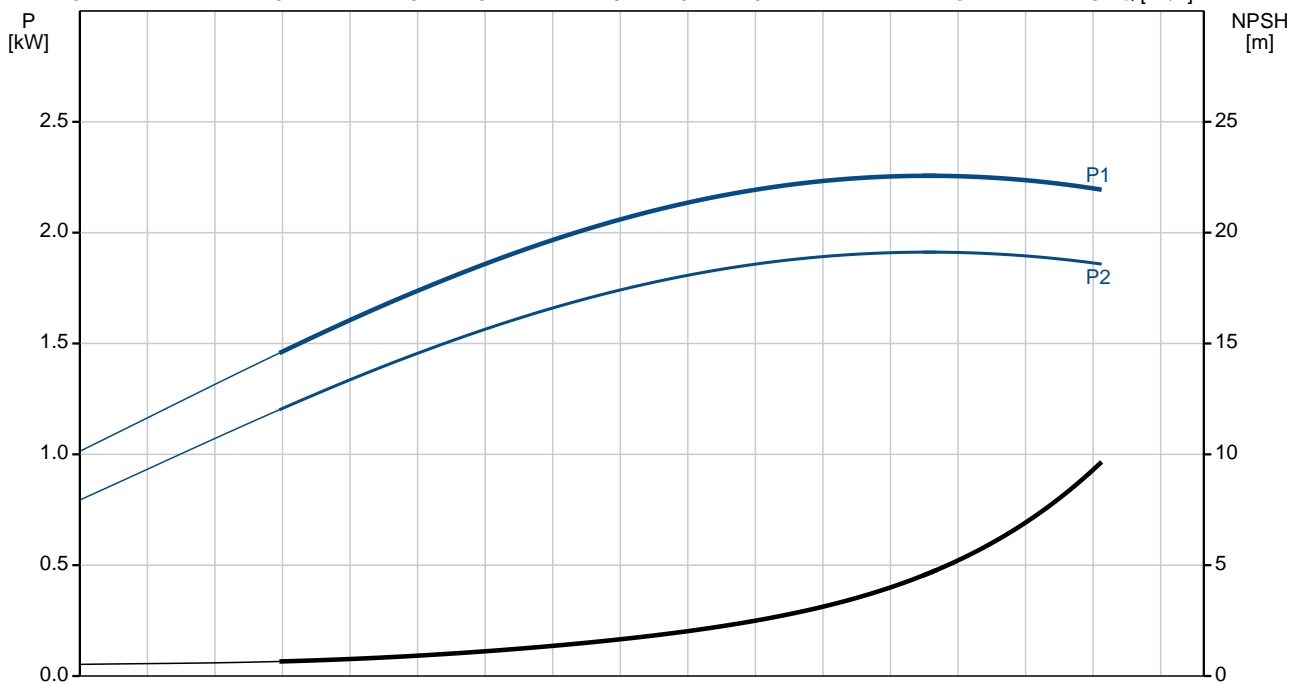
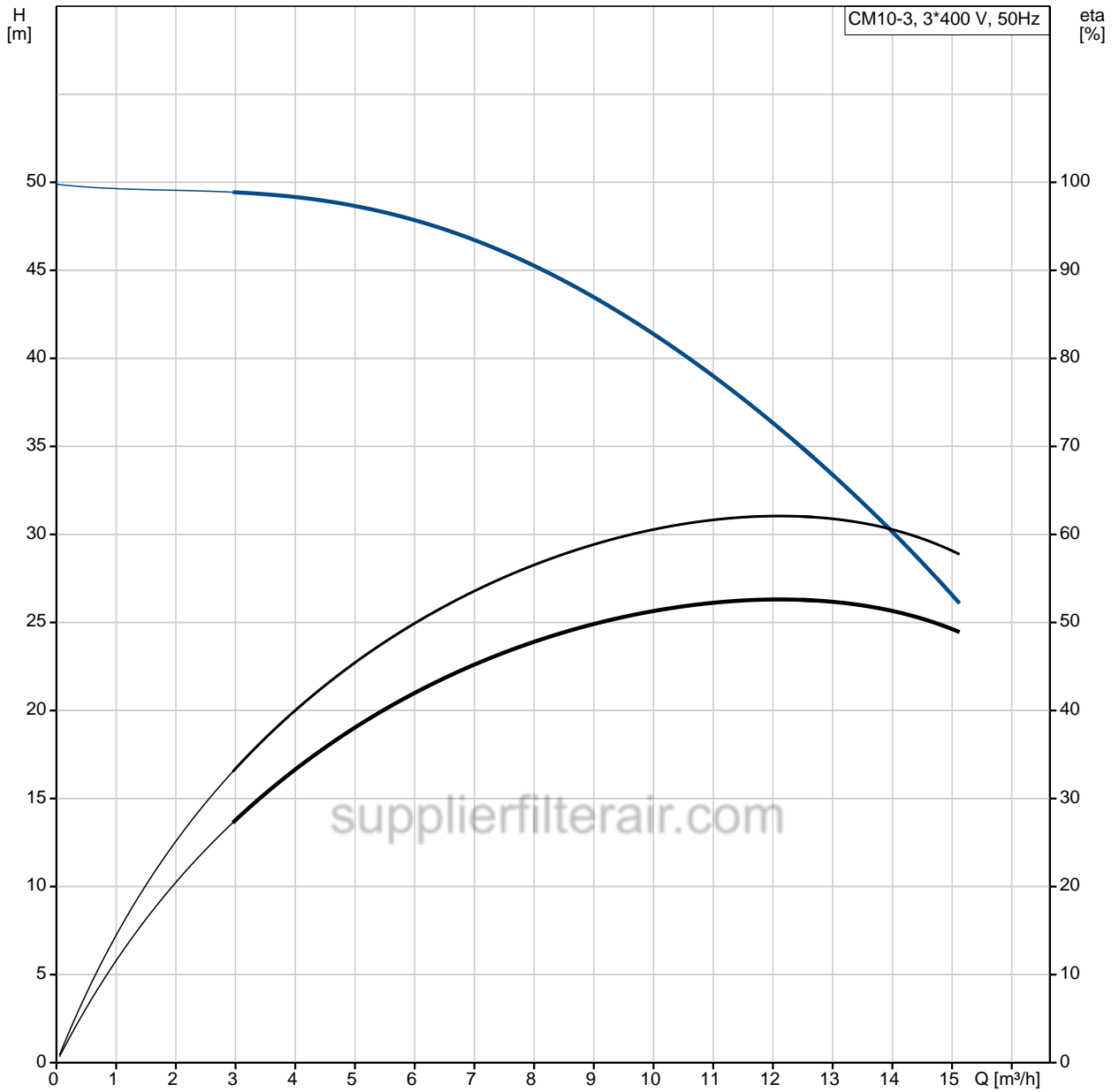
Electrical data:

Motor type: 90SC
 IE Efficiency class: IE2
 Rated power - P2: 2.2 kW
 Mains frequency: 50 Hz
 Rated voltage: 3 x 220-240D/380-415 V
 Service factor: 1
 Rated current: 8,15-7,85/4,7-4,5 A
 Starting current: 890-1020 %
 Rated speed: 2880-2910 rpm
 Motor efficiency at full load: 83.2 %
 Enclosure class (IEC 34-5): IP55
 Insulation class (IEC 85): F

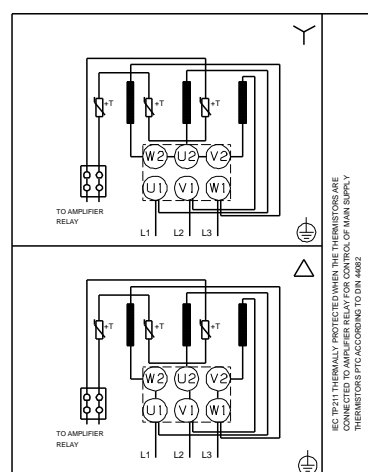
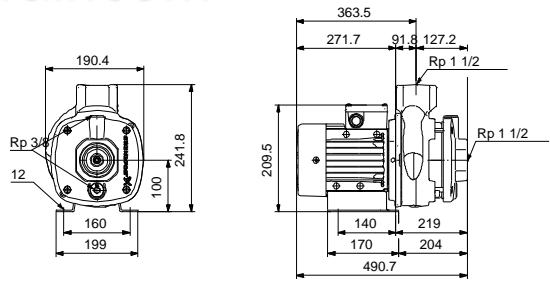
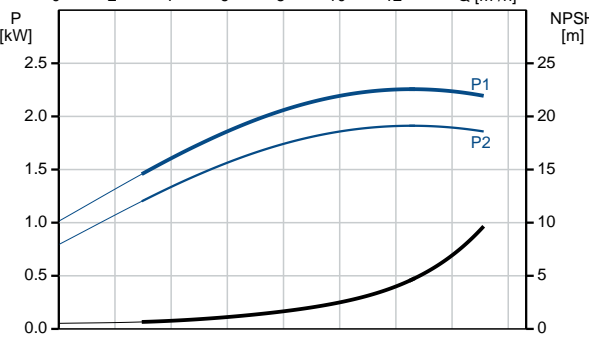
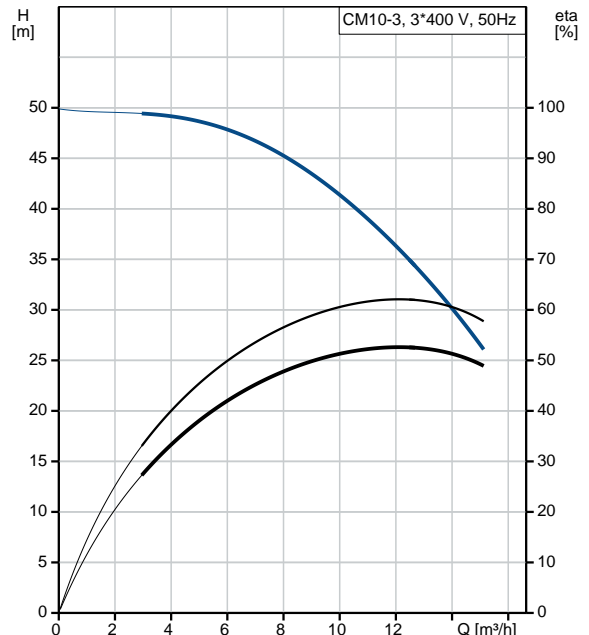
Others:

Minimum efficiency index, MEI : 0,7
 Net weight: 35.8 kg
 Gross weight: 38.3 kg

96806946 CM10-3 50 Hz

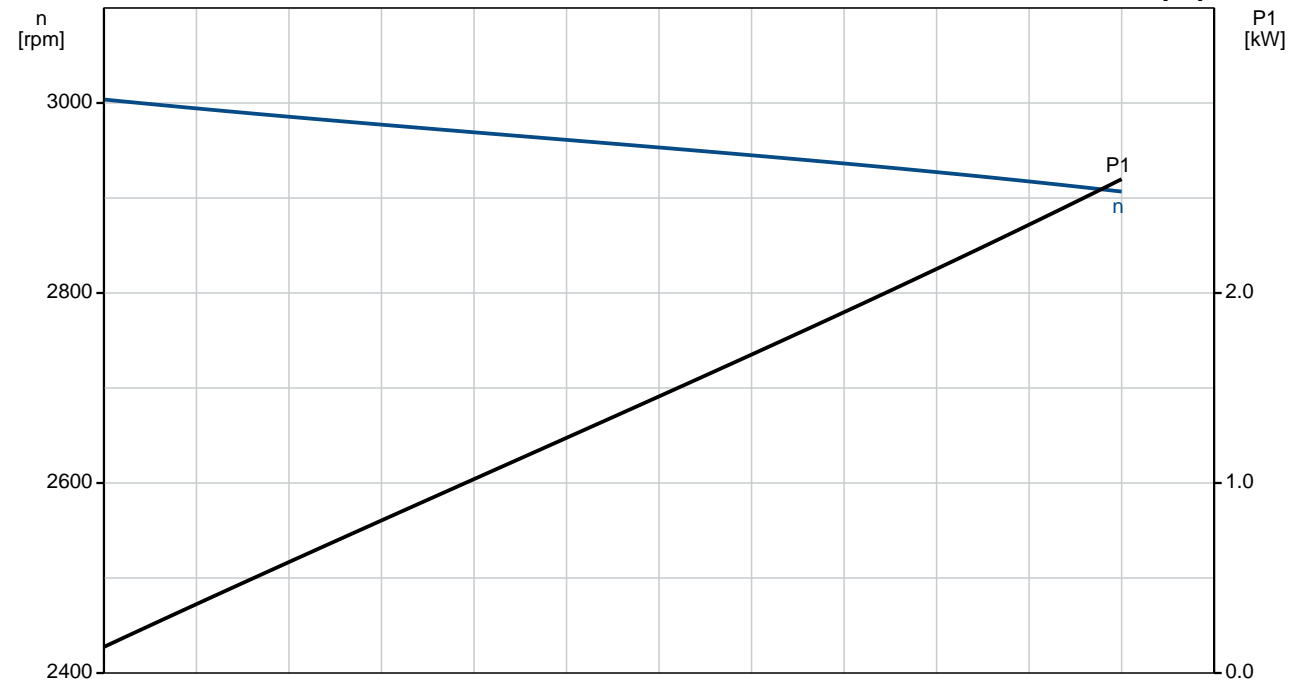
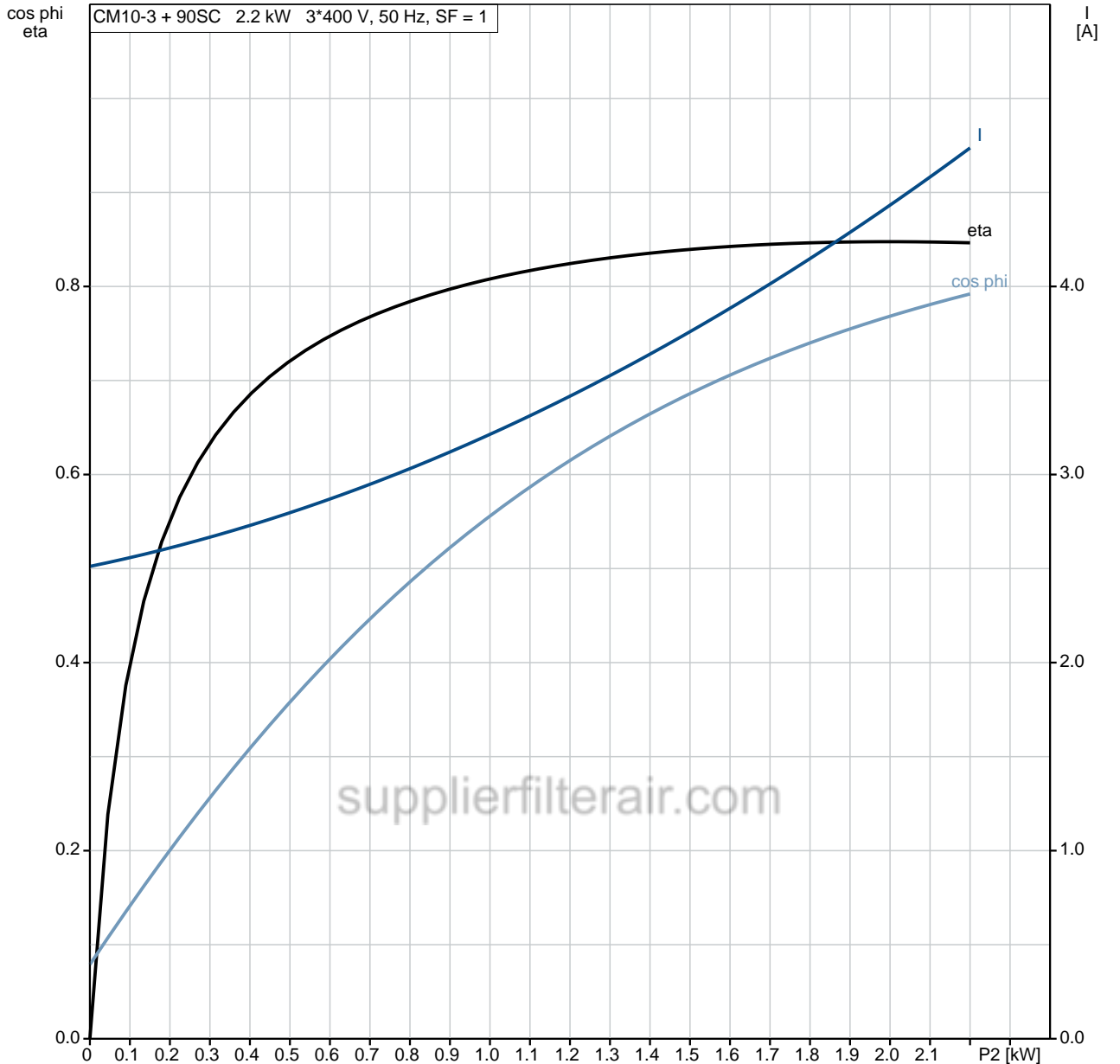


Description	Value
General information:	
Product name:	CM10-3 A-R-A-E-AVBE
Product No:	96806946
EAN number:	5700310918938
Technical:	
Speed for pump data:	2900 rpm
Rated flow:	10 m³/h
Rated head:	40.5 m
Impellers:	3
Primary shaft seal:	AVBE
Approvals on nameplate:	CE,WRAS,ACS,TR,EAC
Curve tolerance:	ISO9906:2012 3B
Pump version:	A
Model:	A
Materials:	
Pump housing:	Cast iron EN-JL1030 ASTM 30 B
Impeller:	Stainless steel DIN W.-Nr. 1.4301 AISI 304
Material code:	A
Rubber:	EPDM
Code for rubber:	E
Installation:	
Maximum ambient temperature:	55 °C
Maximum operating pressure:	10 bar
Max pressure at stated temp:	6 bar / 90 °C 10 bar / 40 °C
Flange standard:	WHITWORTH THREAD RP
Connect code:	R
Pump inlet:	Rp 1 1/2
Pump outlet:	Rp 1 1/2
Liquid:	
Pumped liquid:	Water
Liquid temperature range:	-20 .. 90 °C
Liquid temperature during operation:	20 °C
Density:	998.2 kg/m³
Electrical data:	
Motor type:	90SC
IE Efficiency class:	IE2
Rated power - P2:	2.2 kW
Mains frequency:	50 Hz
Rated voltage:	3 x 220-240D/380-415V V
Service factor:	1
Rated current:	8,15-7,85/4,7-4,5 A
Starting current:	890-1020 %
Rated speed:	2880-2910 rpm
Motor efficiency at full load:	83.2 %
Enclosure class (IEC 34-5):	IP55
Insulation class (IEC 85):	F
Motor protec:	NO
Others:	
Minimum efficiency index, MEI :	0,7
Net weight:	35.8 kg
Gross weight:	38.3 kg

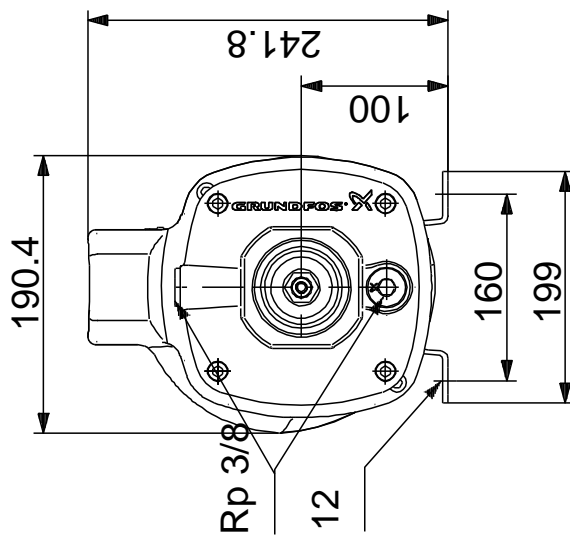
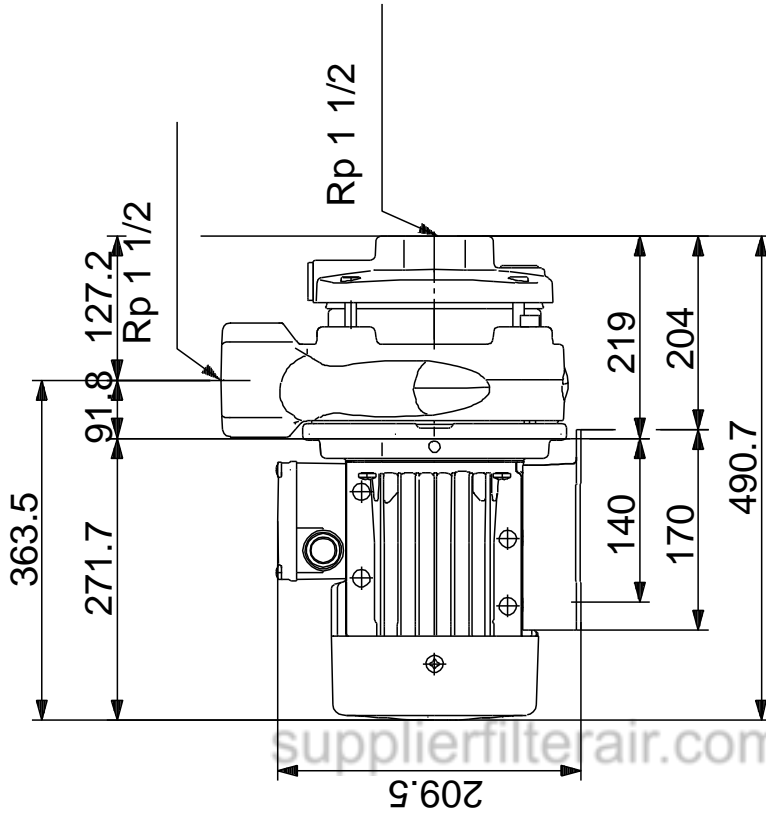


96806946 CM10-3 50 Hz

CM10-3 + 90SC 2.2 kW 3*400 V, 50 Hz, SF = 1

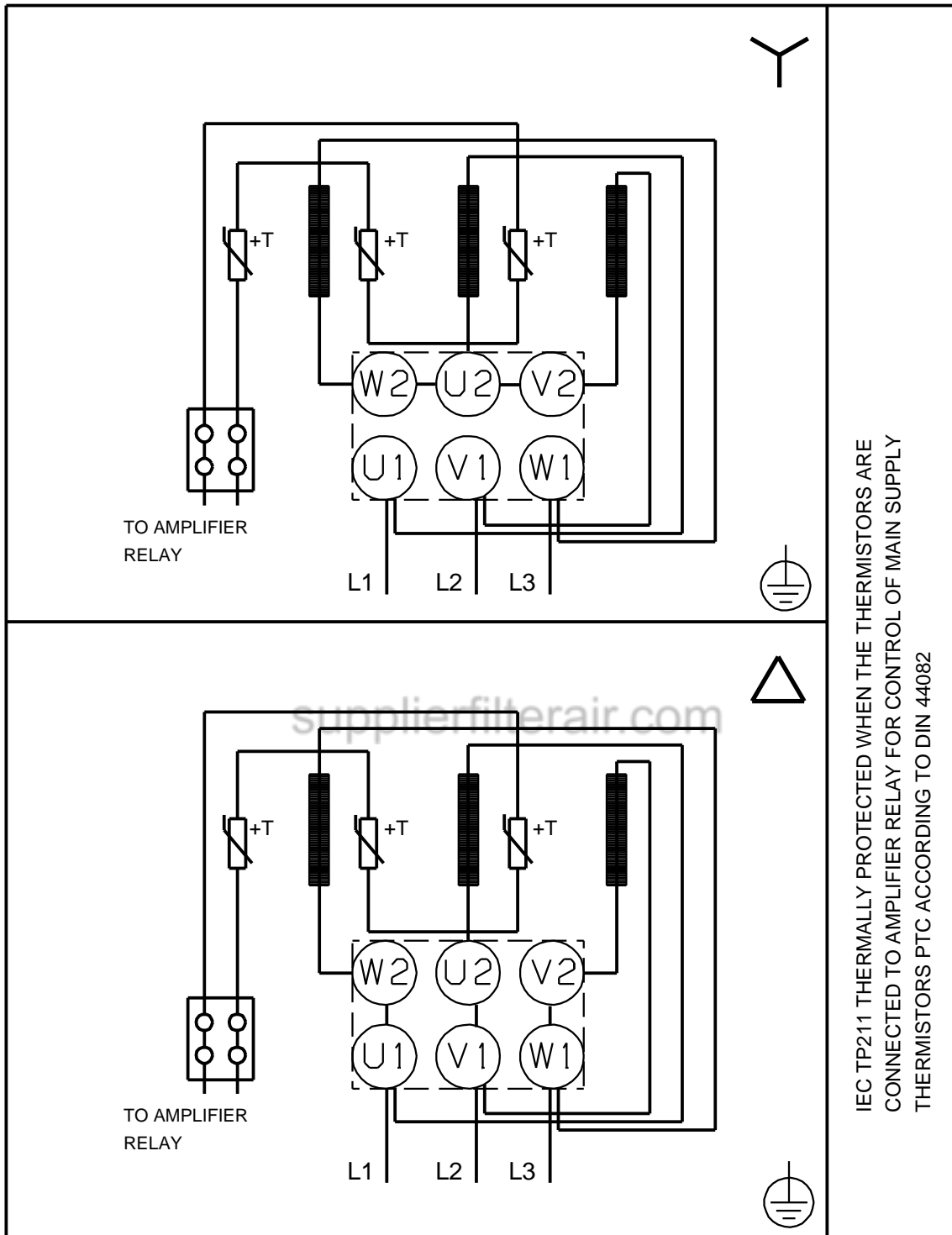


96806946 CM10-3 50 Hz



Note! All units are in [mm] unless others are stated.
 Disclaimer: This simplified dimensional drawing does not show all details.

96806946 CM10-3 50 Hz



IEC TP211 THERMALLY PROTECTED WHEN THE THERMISTORS ARE
 CONNECTED TO AMPLIFIER RELAY FOR CONTROL OF MAIN SUPPLY
 THERMISTORS PTC ACCORDING TO DIN 44082

Note! All units are in [mm] unless others are stated.

Disclaimer: The information about the Grundfos pump in this document may be outdated.

Data may be subject to alterations without further notice.

Please contact us to verify the data above is still accurate/up-to-date.

All information is copyright Grundfos.



info@lenntech.com

www.lenntech.com

tel. +31-15-261.09.00

fax. +31-15-261.62.89